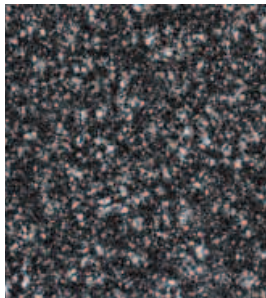
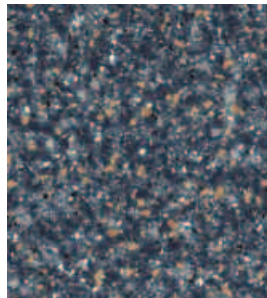


# Minerelle - kitchen surface range

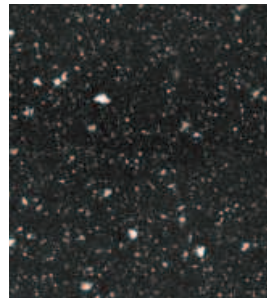
A natural mineral and polyester range of solid surface components that can be seamlessly jointed using standard woodworking tools, to create a finished work surface that has an amazing one-piece appearance



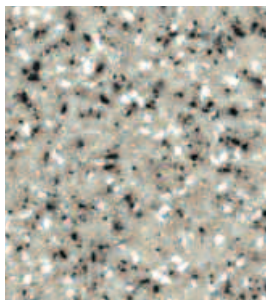
Grafton	
Design code	2030
Upstand (50mm)	Yes
Upstand (100mm)	Yes
Splashback	Yes
Adhesive	Black
Worktop saver	Yes
Additional edging	Yes



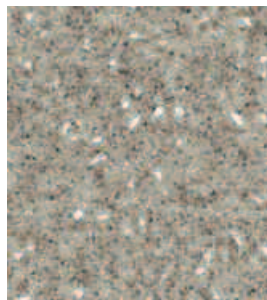
Karst	
Design code	2009
Upstand (50mm)	Yes
Upstand (100mm)	Yes
Splashback	Yes
Adhesive	Blue
Worktop saver	Yes
Additional edging	Yes



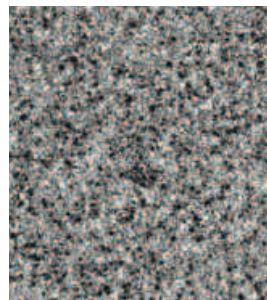
Nightsky	
Design code	2000
Upstand (50mm)	Yes
Upstand (100mm)	Yes
Splashback	Yes
Adhesive	Black
Worktop saver	Yes
Additional edging	Yes



Cheviot	
Design code	2006
Upstand (50mm)	Yes
Upstand (100mm)	Yes
Splashback	Yes
Adhesive	Ivory
Worktop saver	Yes
Additional edging	Yes



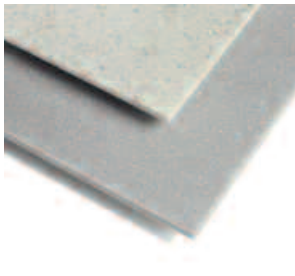
Harvest	
Design code	2007
Upstand (50mm)	Yes
Upstand (100mm)	Yes
Splashback	Yes
Adhesive	Ivory
Worktop saver	Yes
Additional edging	Yes



Fusion	
Design code	2002
Upstand (50mm)	Yes
Upstand (100mm)	Yes
Splashback	Yes
Adhesive	Light Grey
Worktop saver	Yes
Additional edging	Yes



Specification
2mm thick solid surface that is tough, non-porous and totally hygienic
Safe, substantial and environmentally preferred P3 chipboard core
6mm thick edging with a standard 3mm radius to top and bottom edges. The substantial edge thickness provides the opportunity to router alternative profiles if desired
A resin balancer to the underside of the worktop gives a stable and flat component with a 100% moisture resistant seal



**Samples**  
 Samples of Minerelle can be requested via the free 24 hour faxline: 0800 634 0113. Alternatively, call 0121 561 4245 or visit: [www.minerelle.com](http://www.minerelle.com)

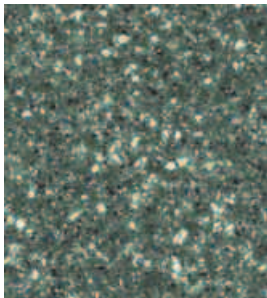
**10** year guarantee to cover defective materials and/or manufacture. For further details please refer to the manufacturer's full warranty statement.

# 40mm

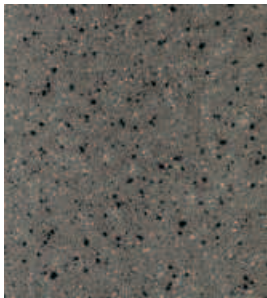


**Sizes and prices**

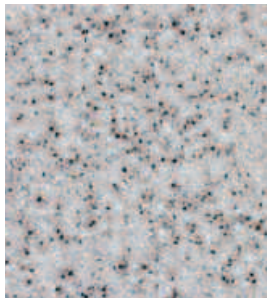
Size
<b>Work surfaces</b>
2050x650x40mm edged 1 long 2 short
4100x650x40mm edged 1 long 2 short
2050x900x40mm edged 2 long 1 short
<b>Splashbacks</b>
4100x600x6mm
<b>Upstands</b>
4100x50x12mm (3mm profile top edge)
4100x100x12mm (3mm profile top edge)
<b>Worktop savers</b>
400x300x12mm
<b>Additional edging</b>
1350x43x6mm



Kelp	
Design code	2011
Upstand (50mm)	Yes
Upstand (100mm)	Yes
Splashback	Yes
Adhesive	Green
Worktop saver	Yes
Additional edging	Yes



Reform	
Design code	2051
Upstand (50mm)	Yes
Upstand (100mm)	Yes
Splashback	Yes
Adhesive	Dark Grey
Worktop saver	Yes
Additional edging	Yes



Quartz	
Design code	2019
Upstand (50mm)	Yes
Upstand (100mm)	Yes
Splashback	Yes
Adhesive	Light Grey
Worktop saver	Yes
Additional edging	Yes

All of the above are ex stock items. The following non stock items can also be supplied within 15 working days, and are subject to despatch charge:

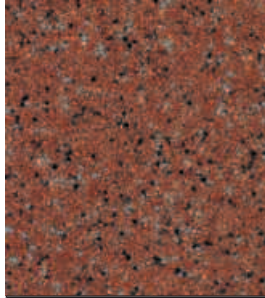
<b>Work surfaces</b>
3000x900x40mm edged 4 sides, 'D' end
4100x900x40mm edged 4 sides
<b>Splashbacks</b>
600x750x6mm
900x750x12mm
1800x750x12mm
1500x1220x12mm
<b>Upstand</b>
4100x150x12mm (3mm profile top edge)
<b>Additional edging</b>
4100x43x6mm

We also stock Minerelle solid surface worktops in a 30mm range. For details please see page 98 in the Bathroom Panels section.

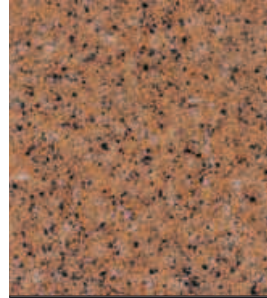
- Benefits**
- So exceptionally hygienic and safe that it is specified for use in pharmaceutical laboratories
  - Manufactured in the UK by the largest solid surface component producer in Europe
  - 17 ex stock surface designs with the look and feel of real stone but tough enough to take everyday living
  - Because the surface colour goes solidly through the thickness of the material any mishaps can be polished away. Even deep gouges can be repaired. The renewable quality of Minerelle means that it will look as good in 10 years as on the day it was installed
  - 4.1m lengths reduce off-cuts and the need for jointing
  - Factory bonded edges to save installation time
  - Minerelle is a totally stable product that can be seamlessly jointed, creating a fantastic 'one-piece' effect that will not de-laminate
  - The non-porous surface is perfect for wet areas, is easy to clean and is resistant to household cleaning chemicals
  - The solid colour will not fade, and is highly resistant to impact and heat
  - During transit all four edges are covered with PVCU channeling, and the surface is coated with a removable protective film to provide protection
  - Each work surface contains a sheet detailing the installation process
  - Free training clinics available across the UK for experienced kitchen fitters



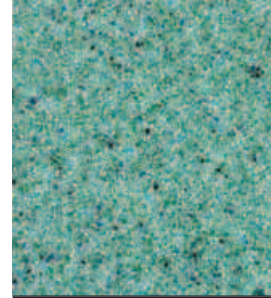
# Minerelle



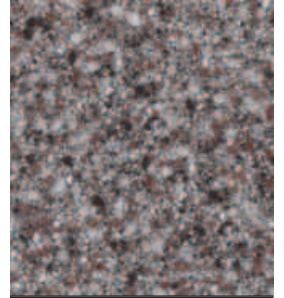
Sahri	
Design code	2048
Upstand (50mm)	Yes
Upstand (100mm)	Yes
Splashback	Yes
Adhesive	Red
Worktop saver	Yes
Additional edging	Yes



Krokodil	
Design code	2021
Upstand (50mm)	Yes
Upstand (100mm)	Yes
Splashback	Yes
Adhesive	Mid Brown
Worktop saver	Yes
Additional edging	Yes



Harricana	
Design code	2022
Upstand (50mm)	Yes
Upstand (100mm)	Yes
Splashback	Yes
Adhesive	Light Green
Worktop saver	Yes
Additional edging	Yes



Montana	
Design code	2037
Upstand (50mm)	Yes
Upstand (100mm)	Yes
Splashback	Yes
Adhesive	Light Grey
Worktop saver	Yes
Additional edging	Yes



Tumble	
Design code	2047
Upstand (50mm)	Yes
Upstand (100mm)	Yes
Splashback	Yes
Adhesive	Ivory
Worktop saver	Yes
Additional edging	Yes

## 30mm Minerelle

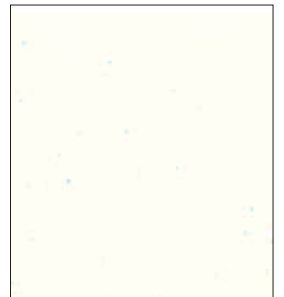
We also stock Minerelle in a 30mm profile. This size is used widely in bathroom environments for its 'one-piece' water resistant capability - making it the perfect choice for bathroom surfaces and furniture. See page 98



Scent	
Design code	2050
Upstand (50mm)	Yes
Upstand (100mm)	Yes
Splashback	Yes
Adhesive	Soft White
Worktop saver	Yes
Additional edging	Yes



Angel	
Design code	2049
Upstand (50mm)	Yes
Upstand (100mm)	Yes
Splashback	Yes
Adhesive	Bright White
Worktop saver	Yes
Additional edging	Yes



Sea Salt	
Design code	2055
Upstand (50mm)	Yes
Upstand (100mm)	Yes
Splashback	Yes
Adhesive	Pearl
Worktop saver	Yes
Additional edging	Yes

# Minerelle

The comprehensive range of accessories shown below are all ex stock and have been selected to provide everything that a fitter will need to complete a perfect installation

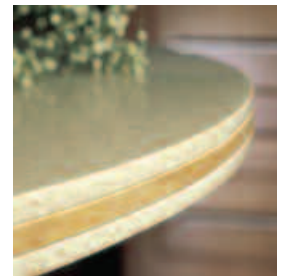


**Installation starter kit**  
The starter kit is packaged in a Minerelle branded presentation box, and includes:

- 10 x sanding discs in 180, 240 and 320 grit
- 2 x grey polishing pads (Scotch Brite)
- 1 x heat reflective tape (5m x 50mm)
- 2 x clean white cloths
- 1 x bottle of Imanol
- 1 x 330ml bottle of Countertop Magic
- 1 x fabrication Manual

### Finishing touches

Additional edging in matching and complementary colours can be used to repair or add further detail to a Minerelle worktop. Available ex stock in 1350mmx43mmx6mm lengths.



Installation and cleaning accessories - all Ex-Stock
Item
Colour matched Adhesive Cartridge (50ml)
Adhesive Applicator gun (for Minerelle adhesive cartridge)
Spare 50ml Nozzle
Imanol Cleaning Solvent (200ml)
Super 'A' Clamp (to apply additional edges)
Polishing pads (box of 10) 229 x 152mm (for fine surface finishing)
180 Grit abrasive discs 150mm diameter (box of 100) will suit Festool
240 Grit abrasive discs 150mm diameter (box of 100) will suit Festool
320 Grit abrasive discs 150mm diameter (box of 100) will suit Festool
Countertop Magic - to polish and clean tops after sanding
Heat Reflective Tape (for hob cut outs) 5m roll x 50mm
Festool Orbital Sander R0150E - 571573
Festool CTL Mini mobile dust extractor - 583358
Festool Sanding Pad Hard ST-STF D150/8-M8H - 484850
Festool Sanding Pad Soft ST-STF D150/8-M8W - 486381
Festool Jigsaw PSB 300 - 561218
Replacement blades for Jigsaw - blade S75/4FS/20 (pack 20) - 490256
Festool Router OF1400 EBQ Plus - 574410
Groove cutter with reversible blades HW S12 D14/45 WM - 574410
Festool Worktop Routing Template APS900 for corner joints and bolt seams - 492727
Installation Starter Kit
Minerelle Consumer Kit
Minerelle Repair Kit -150mm, matching each design

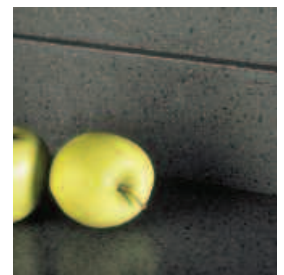
### Finishing touches

Minerelle work surfaces are tough, practical and repairable. However the use of a worktop saver will virtually eliminate the likelihood of scratches and other avoidable damage.



### Finishing touches

Minerelle work surfaces are totally impervious to water, and to complete the protection, upstands and splashbacks are available to prevent the ingress of water between work surface and wall.



### A Fine Finish

We carry a wide selection of specialist tools from the comprehensive Festool professional woodworking and finishing range.



Rotex RO 150 Sander



CT22E Dust Extractor



Trion PS 300 Jigsaw



OF 1400 Router